

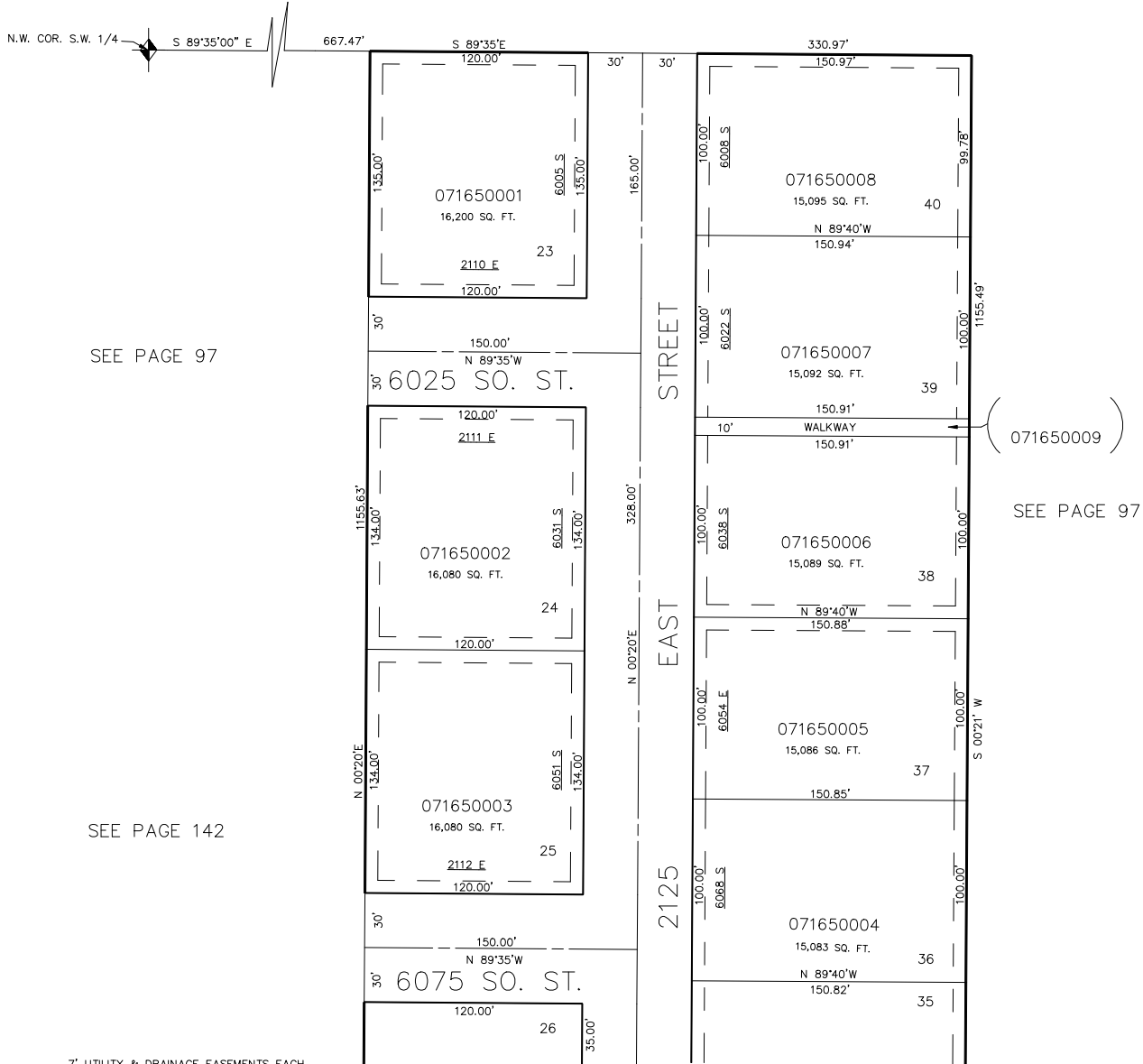
PART OF THE SW. 1/4 SEC. 23, T.5N., R.1W., S.L.B. & M.
EAST HIGHLAND ESTATES SUBDIVISION NO. 2
 LOTS 23-25 & 36-40

165

TAXING UNIT: 159

IN WEBER COUNTY
 SCALE 1" = 50'

SEE PAGE 86-1



SEE PAGE 166